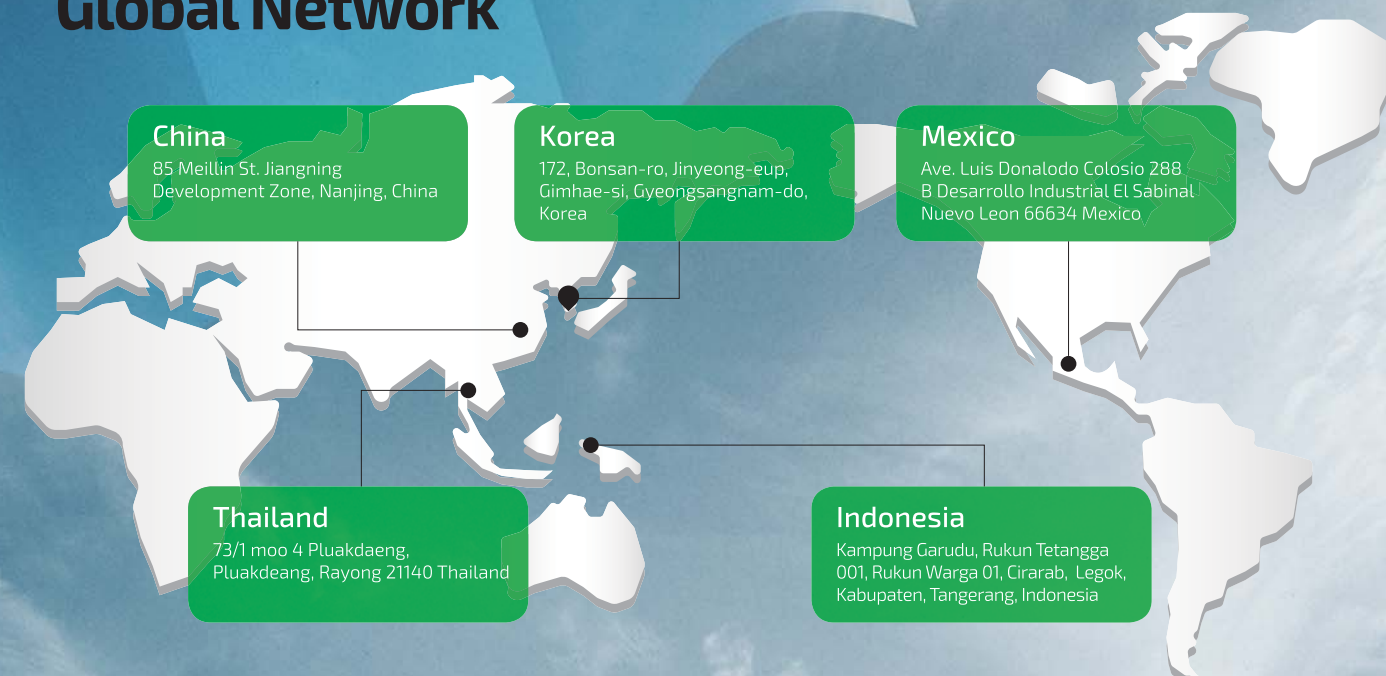


SHINSUNG MOLDTECH

## Global Network



## Technologies



SHINSUNG MOLDTECH

## Machinery Equipment

NO	Machine	Producer	Specification	Range(XYZ)
1	High-speed NC Milling M/C	HWA-CHEON	SIRIUS UL+ - 20,000RPM	1050 x 600 x 550
2	CNC-Machining Center	HWA-CHEON	SIRIUS1250 - 12,000 RPM, etc	2500 x 1250 x 750
3	Die Spotting Press	CMTI	DSP-2515-300TON	2500 x 1500
4	EDM	DeaHan-EDM	3000X1600X700, etc	1800 x 800 x 600
5	Hoist	SHINSUNG-HG	30TON, etc	
6	Injection Molding M/C	LS Mtron	2000Ton, 1050Ton, 450Ton	



**SHINSUNG MOLDTECH CO.,LTD.**

172, Bonsan-ro, Jinyeong-eup, Gimhae-si,  
Gyeongsangnam-do, Korea

TEL +82-55-712-6600

FAX +82-55-712-6649

E-mail [sm@ssdelta.co.kr](mailto:sm@ssdelta.co.kr)

[www.shinsungmoldtech.co.kr](http://www.shinsungmoldtech.co.kr)

[www.ssdelta.co.kr](http://www.ssdelta.co.kr)



**SHINSUNG  
MOLDTECH**

Something good  
will happen to you !

SINCE 2001

**World No.1**  
High Tech Plastic Solution!

**SHINSUNG MOLDTECH CO.,LTD.**



# SHINSUNG MOLDTECH



World No.1 High Tech Plastic Solution!  
We are striving to become the best in the field of high tech plastic solution. As a leading company, we keep strengthening our competitiveness in home appliance, automobile, mobile LCD and precision mold.



- Capabilities of supplying all kinds of interior and exterior part molds.
- Active R&D activities with knowhow and experienced engineers in cooperation with the automobile department.
- Innovation capabilities in order to anticipate customers' needs.
- Pre-study with CAE for the optimal mold structure and productivity prior to mold design.

## Interior Part



## Exterior Part



## Engine Part



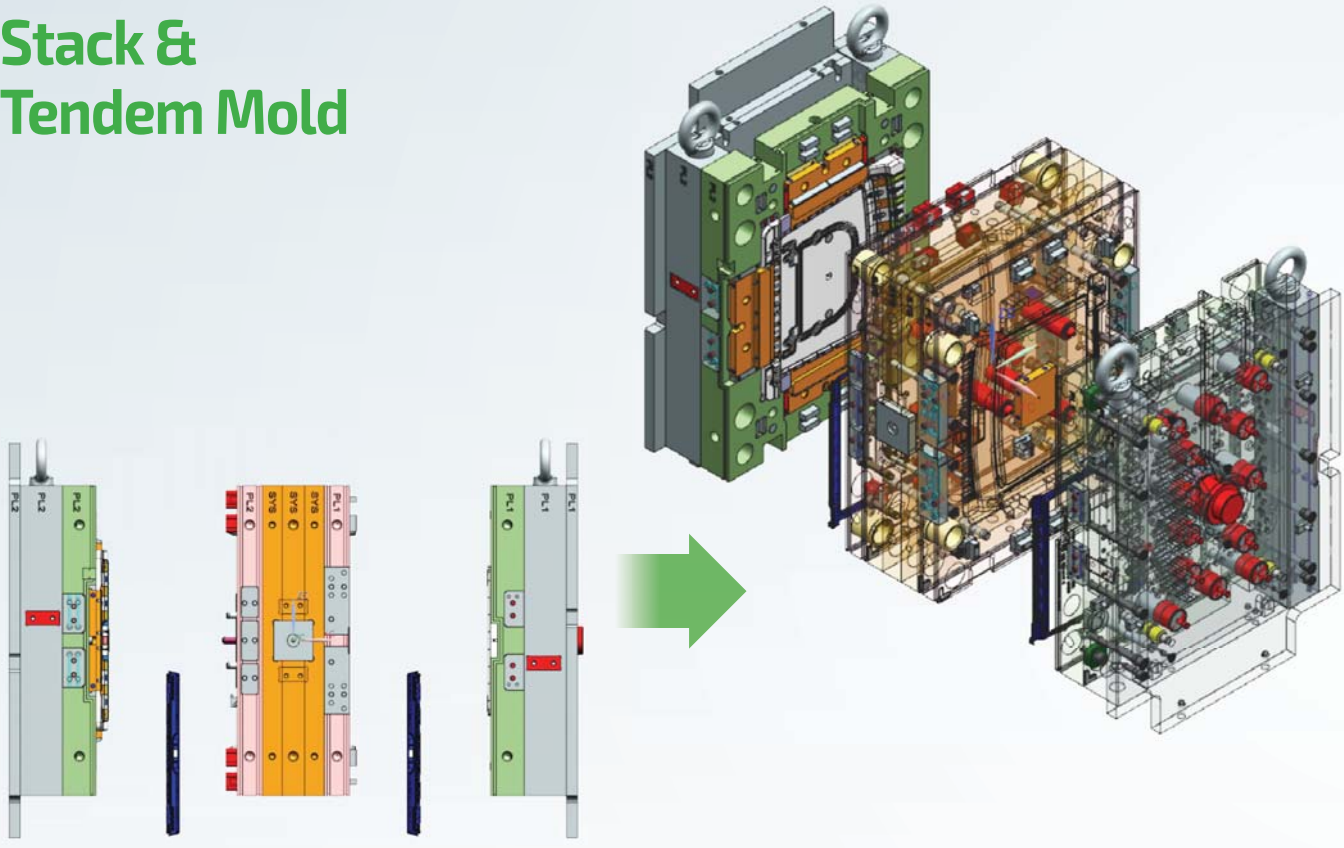
## Chassis Part



## Electric Vehicle Battery Part



## Stack & Tendem Mold



## Home Appliance Part



## D.S.I (Die Sliding Injection)

